

WS_FTP Server

The Smarter Way to Transfer Files

Datasheet

Ipswitch WS_FTP Server 5.0

WS_FTP Server 5.0 is a fully featured, easy-to-administer and easy-to-use FTP server. WS_FTP Server makes important data easily and securely accessible by managing and protecting folders and files and communicating securely with FTP clients. Users may be added to WS_FTP Server from any ODBC-compliant database reducing administration of the file transfer system.

WS_FTP Server allows users to securely share files using SSL (Secure Sockets Layer). SSL technology encrypts the data so it cannot be read if intercepted. When WS_FTP Server and WS_FTP Professional are used together, file transfers are performed securely from computer to the server, maintaining the confidentiality of data.

The addition of Clear Command Channel (CCC) to WS_FTP Server enhances its security capabilities significantly. Using the PASV command, administrators can configure IP addresses and port ranges behind firewalls and Network Address Translation (NAT) devices with or without SSL for optimal protection.

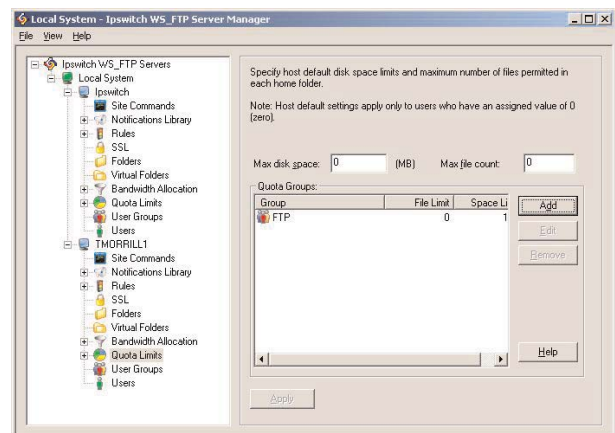
Highlights of WS_FTP Server

- Notification Library provides users with a step-by-step wizard for creating rules that trigger one of four notifications via mobile phone text messaging (SMS), e-mail, pagers or via external programs such as CRM tools or other customer software applications
- Rules feature provides wizards to create notifications incorporating seven built-in rules
- Bandwidth allocation allows greater control over end-user file transfer activity and can maintain optimal file transfer speeds for all users
- Administration of the server is enhanced with easy-to-use tree views of important information
- Disk quota management allows administrators to set disk space quota for users or user groups
- Wizards allow users to create new hosts, set up new users and user groups during the install process
- Log Analyzer allows users to better analyze FTP traffic to optimize server management and maximize resource utilization
- Remote administration allows for the removal of users and the adjustment of permissions from any workstation on the network
- Virtual folders allow several FTP sites to be hosted on different domains on a single machine

System Requirements

- Windows NT 4.0, Windows 2000, Windows XP or Windows Server 2003
- 200 MHz Pentium® II or higher
- 128 MB RAM

Note: WS_FTP Server must run on a server or workstation with a static IP address



WS_FTP Server makes important data easily and securely accessible

10 Maguire Road, Suite 220
Lexington, MA 02421
(781) 676-5700

Zekeringstraat 17
1014 BM, Amsterdam
The Netherlands